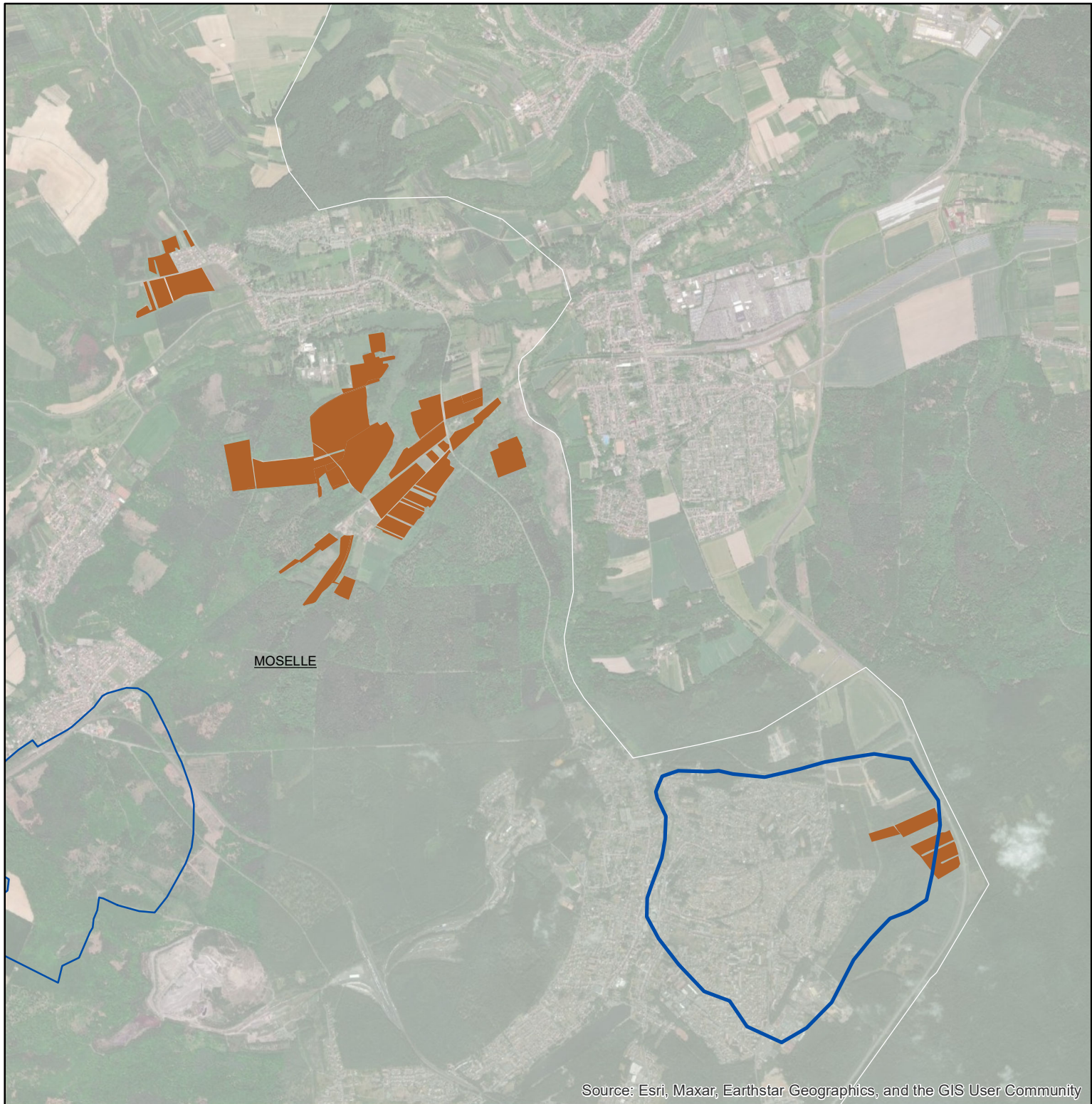
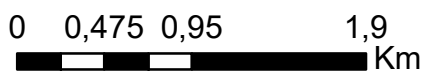




Les parcellaires des agriculteurs concernés en 2019 sur l'AAC 57051 - CREUTZWALD (code SANDRE : 5000)





Source: Esri, Maxar, Earthstar Geographics, and the GIS User Community



Légende de la carte principale

1 couleur = 1 exploitation agricole

Légende de la carte de situation

-  Région Grand Est
-  Bassins hydrographiques

